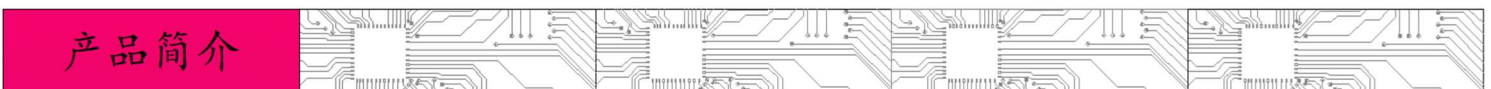
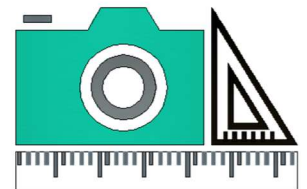
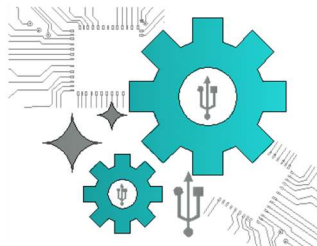


Hongwei Microelectronics

HW-416 SR501 Human Infrared Sensing Module



Product Introduction:

Human body infrared sensor module is an automatic control product based on infrared technology. It is widely used in automatic induction electrical equipment, and is suitable for automatic control products powered by dry batteries.

Specifications:

- 工作电压: DC 3.6~20V
- 静态电流:<50uA
- Level output: 3.3V high, 0V bottom
- Delay time: 8~200 seconds (adjustable)
- Block time: 2.5 seconds (default)

Induction angle: < 100° cone angle
Operating temperature: -15~+70 degrees

Features:

1. Two trigger modes: L is not repeatable, H is repeatable. Jumper can be selected, the default is H.

A. Non-repeatable trigger mode: that is, after sensing the output high level, the output will automatically change from high level to low level as soon as the delay time ends.

B. Repeatable trigger mode: that is, after the induction output is high, in the delay period, if there is a human body active within its sensing range, its output will remain high, until the person leaves before the delay changes the high level to a low level (the induction module will automatically delay a delay period after detecting each activity of the human body, and the time of the next activity is the starting point of the delay time)

2. Photosensitive control: The module has a reserved position, which can be set to light-sensitive control, and it will not be sensed during the day or when the light is strong.

3. Induction output blocking: After each induction output (high level becomes low), the induction module can set a blocking time immediately after, and the sensor does not receive any inductive signal during this time period. This function can realize the interval work of both (inductive output time and blocking time), and can be applied to interval detection products; At the same time, this function can effectively suppress all kinds of interference caused by the load switching process.

Applications:

- **Security products**
- **Human body sensing toys**
- **Human body sensor light**
- **Industrial automation control**

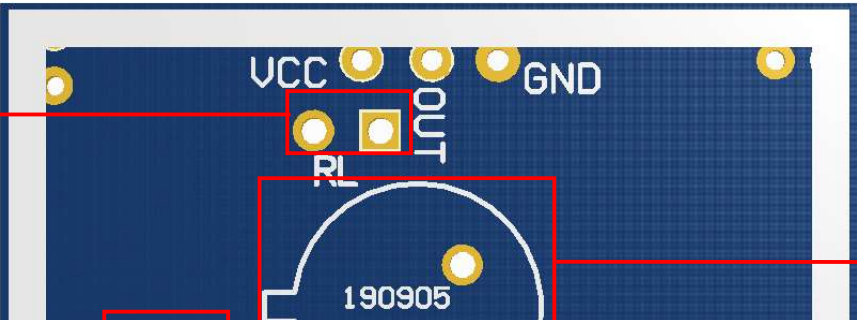
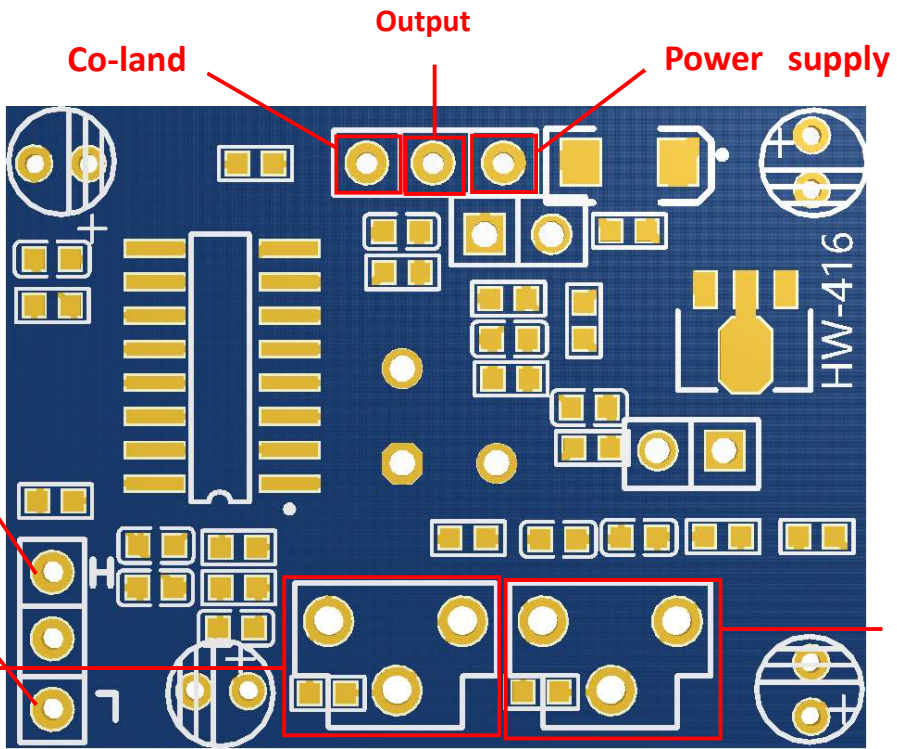
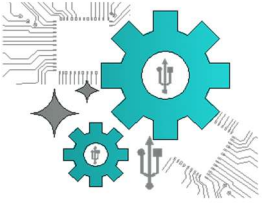


特别提示



1. Pay attention to the wiring according to the diagram and do not connect it incorrectly.
2. This document only represents the product parameters at the time of editing, and will be changed without notice in the future.

功能图

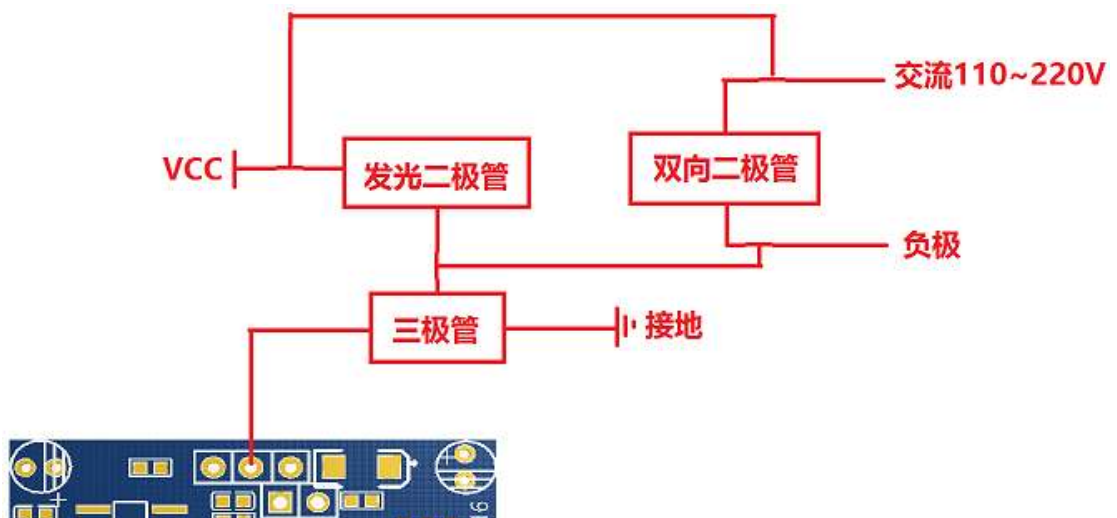
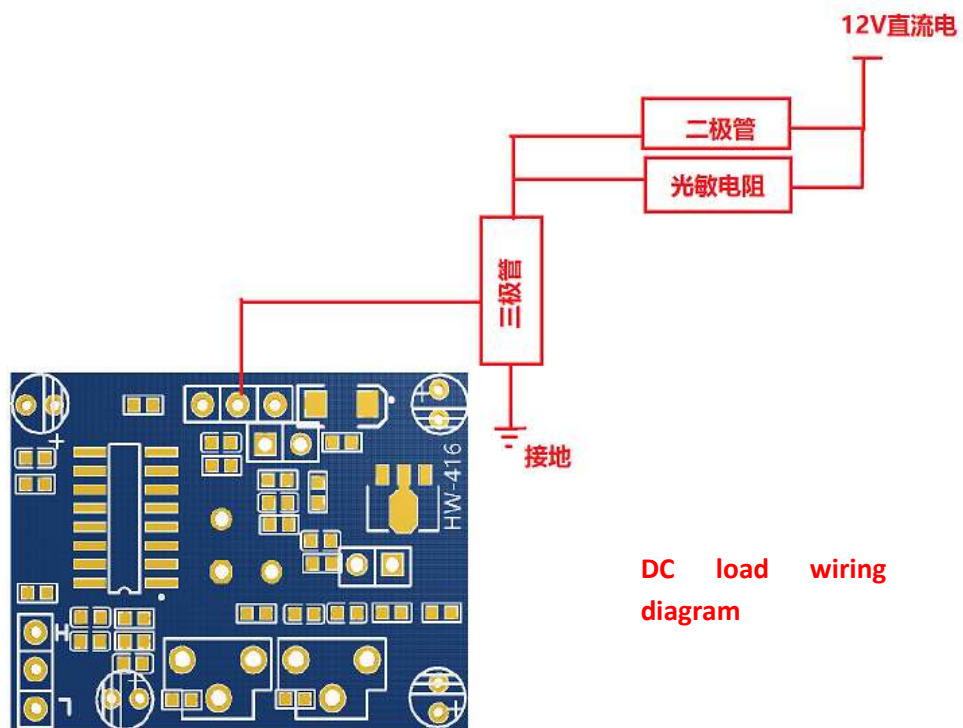


Photose

nsitive

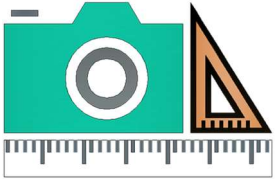
Thermal

Wiring Reference:

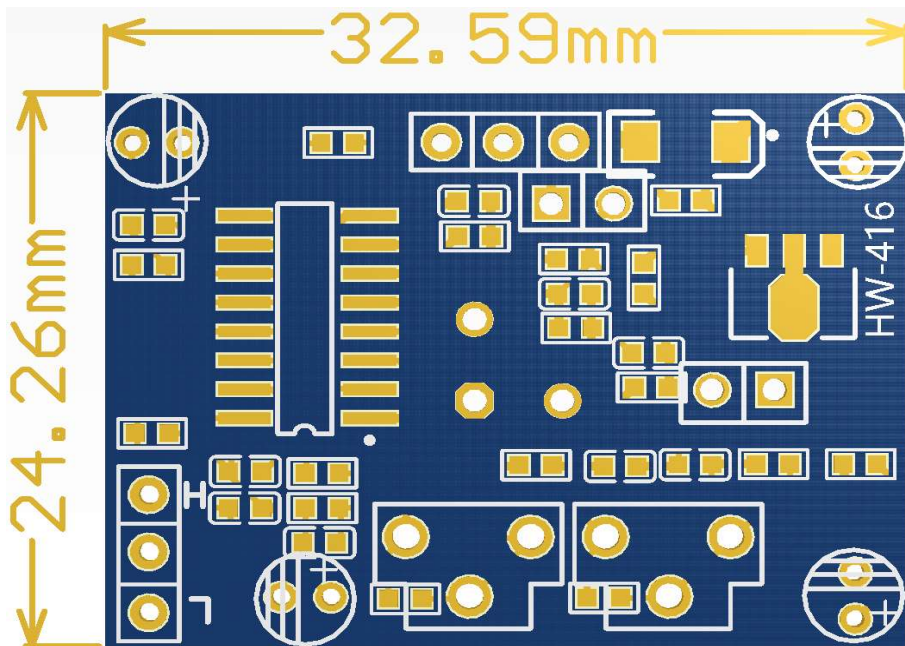




Not yet



Front view of
PCB:



PCB Reverse
View:

