

PZEM-061 With Split CT Single Phase 80-260V 100A 4in1 Digital Energy Meter LCD Display Panel Voltmeter



Product Type	PZEM-061
Current Range	0-100A(with split CT)
Voltage Range	AC 80-260V
Function	<ol style="list-style-type: none"> 1. Measure voltage, current, active power, energy, frequency, power factor 2. Overload alarm 3. Power alarm threshold preset 4. Reset energy 5. Store data when power off. 6. Large-screen LCD 7. Backlight function.

Function Specification

MULTIPLE PRODUCT FUNCTIONS



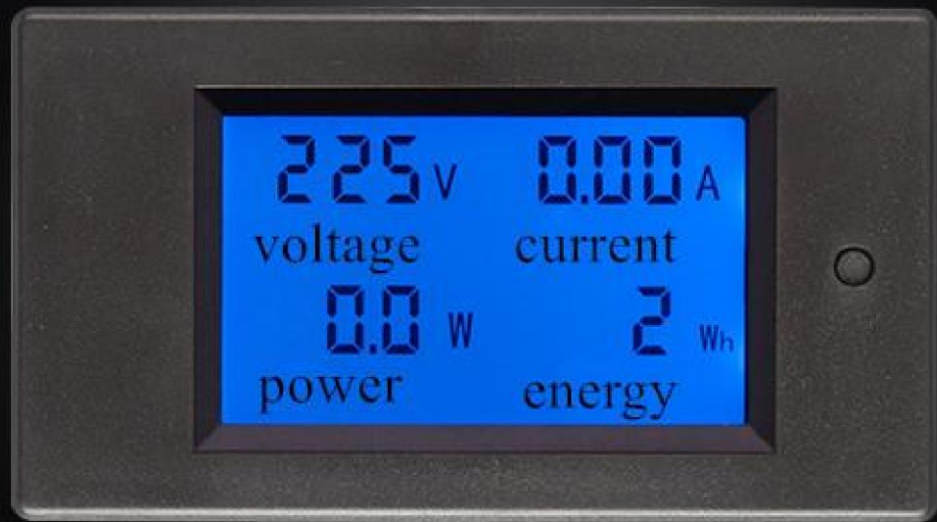
4 Parameter
Measurement



Overload Alarm



Power Alarm
Threshold Pre



Large-screen LCD Display



DISPLAY INTERFACE

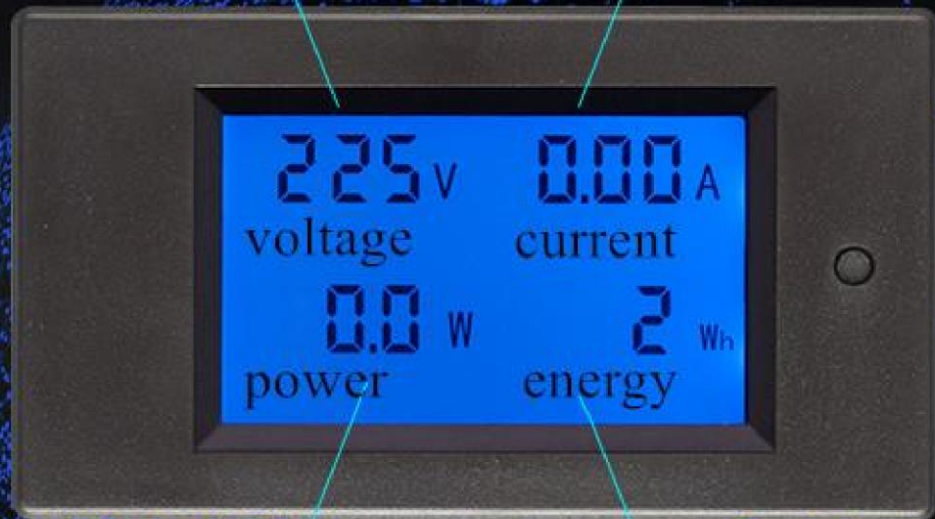
PZEM-061

VOLTAGE

Test range: 80~260V
Display format: 80~260V

CURRENT

Test range: 0~100A
Display format: 0.00~99.99

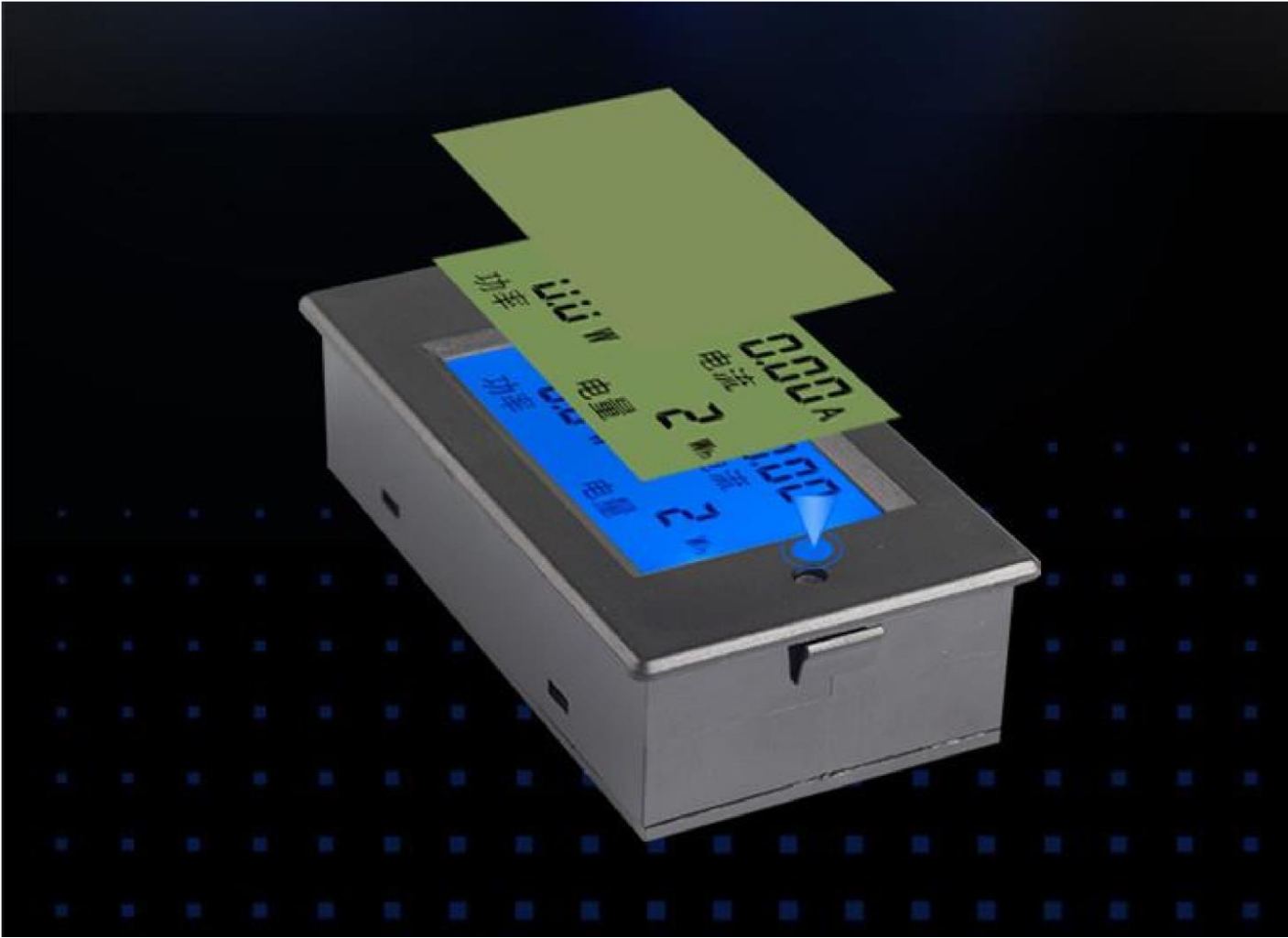


POWER

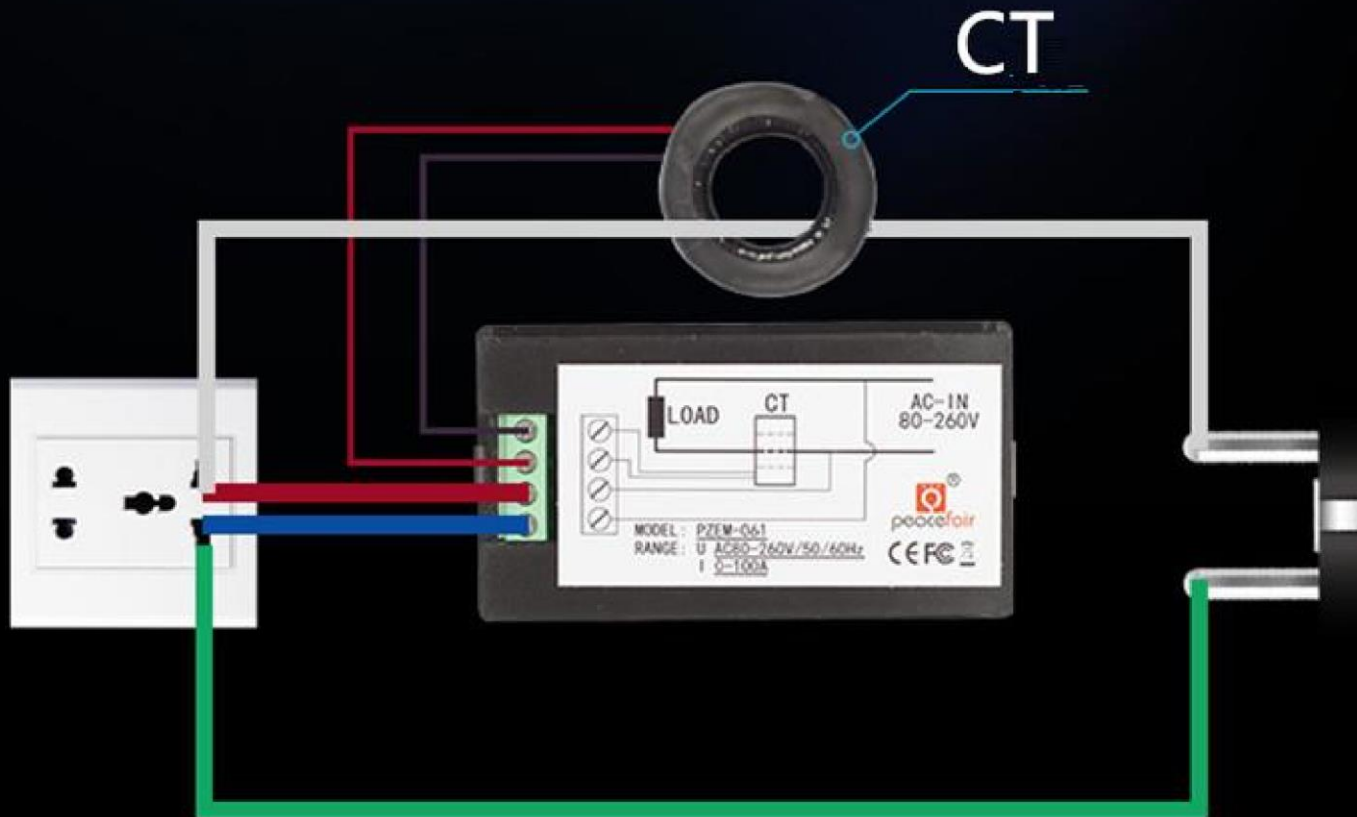
Test range: 0~22kW
Within 1kW, display 0.0~999.9W;
Within 1kW~10kW, display 1000~9999W;
10kW and above, display 0.1~22.0kW

ENERGY

Test range: 0~9999kWh
Within 10KWh, display 0~9999W
10kWh and above display 10~9999



PZEM-061 WIRING DIAGRAM



How to reset the energy data

Step1: Long press the key for 5 seconds until the number in energy display window flash, then release the key.

Step2: Short press the key again, then the energy value is cleared and exit the reset flashing state.If you don't want

to clear, then long press the key for 5 seconds until the number doesn't flash, it means the energy value is not cleared and will exit the reset state.

How to Set power alarm threshold

Step1: Long press the key until the LCD screen display "SET CLr", then release the key to enter the setting state

Step2: Power window display the current power alarm value and the last digit begin to flash, then you can short press to plus 1, when there is no operating over 3 seconds, it will switch the digit position automatically, the setting method is as same as the above.

Step3: After finish the setting, long press the key over 5 seconds will store automatically and exit, the range of active power threshold is 0.0~22kW

Size Information

