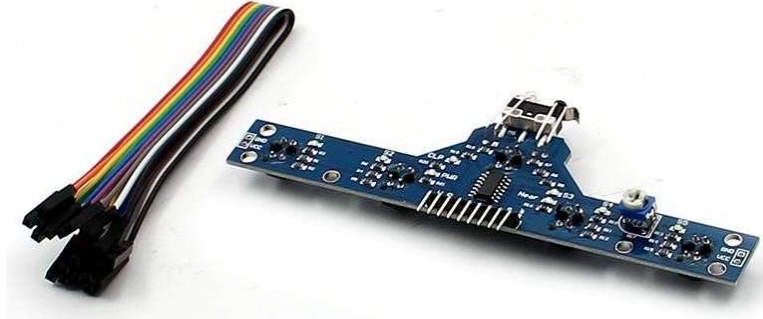


## Line Tracking Module

Model: BFD-1000



### Description:

BFD-1000 specifically designed as black (white) Seek line, especially for complex black and white lines, black and white line crossing detection, it has a 6-channel high sensitivity infrared sensor (5way transmission line, 1 shield barrier), able to accurately identify black and white lines.

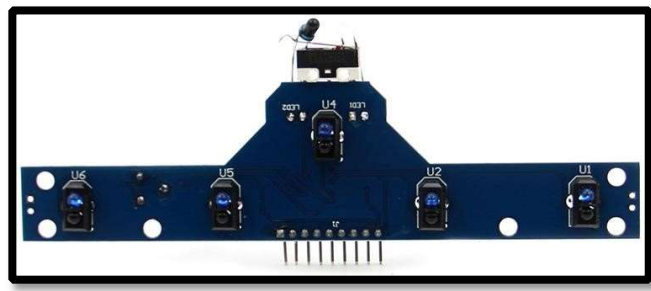
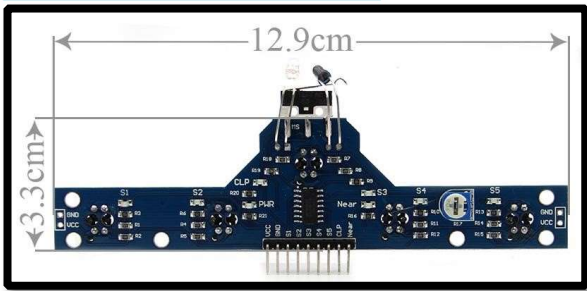
### Features:

- ❖ Integrated 5-way tracking sensor with high sensitivity for low environmental impact, able to accurately complex black line (white line) to track, for a simple black line tracking more ease.
- ❖ Integrates a barrier infrared sensors, unblended distance can be adjusted by sliding rheostat.
- ❖ BFD-1000 has a specially designed touch detection sensor, making the design simpler from the robot.
- ❖ All the output signal to a digital signal (high and low), convenient and microcontroller.
- ❖ Has all the sensor output status LED light as indicator for easy debugging.
- ❖ Supports voltage of 3.0-5.5v meet most system requirements.
- ❖ With high sensitivity of the sensor, the tracking range is between 0.5mm-40mm without any need to make any adjustments change.

### Specifications:

- Detecting distance: 0-4cm (black line sensor) 0-5cm (adjustable distance detection)
- Input voltage: 3.0-5.5V
- Output Type: Digital output (high and low)
- Size: 12.9x3.3cm

More Detailed Photos:



*Made in China*