

Arduino Current Sensor AC 100A

Model: SCT-013

Specifications:

Characteristics : Opening size: 13mm*13mm,

Non-linearity±3% (10%—120% of rated input current)

1m leading wire, standard Φ3.5 three core plug output.

Current output type and voltage output type (voltage output type built-in sampling resistor)

Purpose: Used for current measurement, monitor and protection for AC motor, lighting equipment, air compressor etc

Core material: ferrite

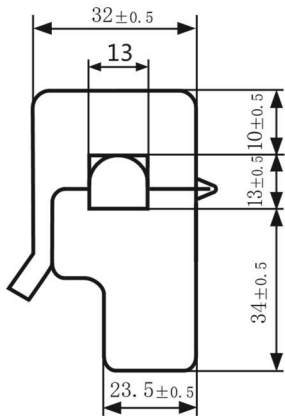
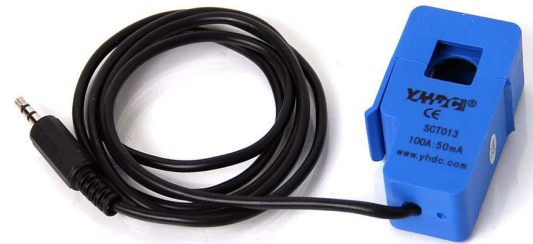
Mechanical strength: the number of switching is not less than 1000 times(test at 25°C)

Safety index: Dielectric strength(between shell and output)1000V AC/1min

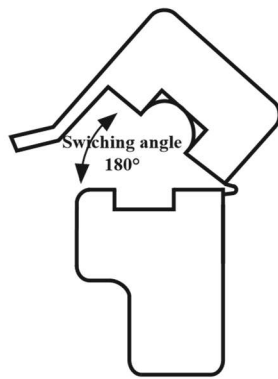
Fire resistance property: In accordance with UL94-Vo

Work temperature: -25°C~+70°C

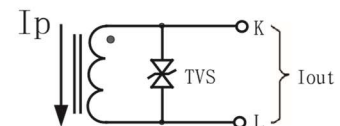
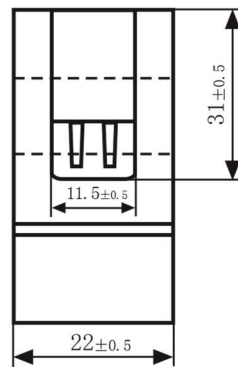
Outline size diagram: (in mm)



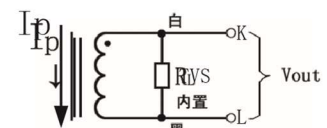
Front View



Side View



Current output type



Voltage output type

Schematic diagram

Three-core plug size

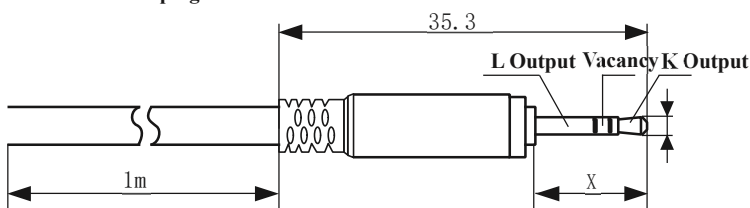


Diagram for standard three-core plug

ΦY

	X	Y	select
2.5mm Audio Plug	11.9	2.5	and use
3.5mm Audio Plug	15.0	3.5	standard

Table of technical parameter:

Model	SCT-013-000
Input current	0-100A
Output type	0-50mA
Model	SCT-013-025
Input current	0-25A
Output type	0-1V



※ Output type: voltage output type built-in sampling resistor, current output type built-in protective diode.